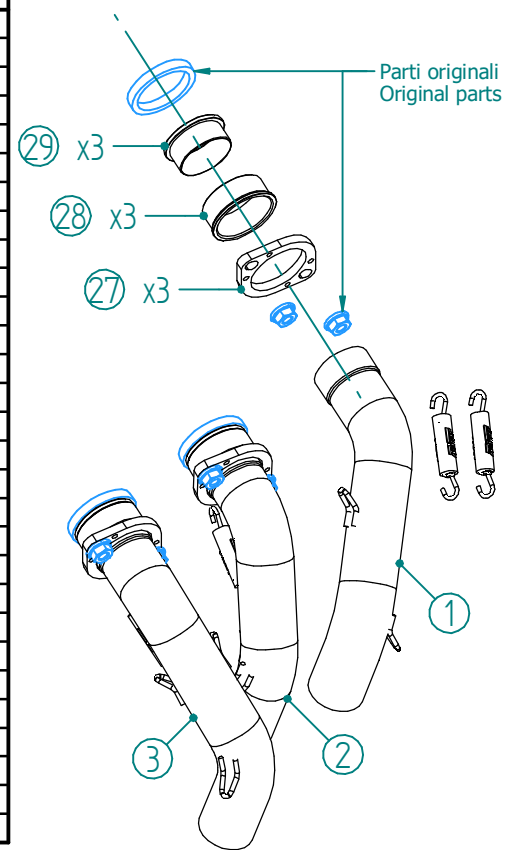


#	DESCRIPTION	PART NUMBER	QTY
1	Collettore #1 / Down pipe #1	9773Y066S2A	1
2	Collettore #2 / Down pipe #2	9773Y066S2B	1
3	Collettore #3 / Down pipe #3	9773Y066S2C	1
4	Tubo di raccordo 3-1 / Link pipe 3-1	9773Y078S2D	1
5	Tubo di raccordo / Link pipe	9773Y078S2E	1
6	Silenziatore / Muffler db killer 50.DK.204.0	AK-1 300	1
7	Vite M8x20 / Screw M8x20	50.73.894.1	1
8	Rondella in alluminio / Aluminium washer	50.73.857.1	1
9	Dado M8 flangiato / Flanged nut M8	50.73.393.1	2
10	Vite M8x40 / Screw M8x40	50.73.1103.1	1
11	Dado M8 autobloccante / M8 locknut	50.73.1101.1	1
12	Staffa / Bracket	50.SS.1606.0	1
13	Staffa / Bracket	50.SS.1569.0	1
14	Vite M8 x 16 / Screw M8 x 16	50.73.098.1	2
15	Rondella di sicurezza / Safety washer	50.73.604.1	2
16	Fascetta / Clamp	50.73.795.1	2
17	Staffa / Bracket	50.73.1122.0	2
18	Dado rapido M5 / M5 cage nut	50.73.674.1	2
19	Cover in carbonio / Carbon cover	50.CR.070.0	1
20	Rondella M5 / Washer M5	50.73.351.1	2
21	Vite M5 x 8 / Screw M5 x 8	50.73.233.1	2
22	Rondella in alluminio nera / Black aluminium washer	50.73.221.1	1
23	Vite M8x40 / Screw M8x40	50.73.075.1	1
24	Molla media / Mid-size spring	50.73.359.1	10
25	Molla lunga / Long spring	50.71.080.1	2
26	Tubo in gomma per molla / Rubber pipe for spring	50.73.210.1	10
27	Flangia in alluminio / Aluminium flange	50.73.339.1	3
28	Boccola esterna in acciaio / External steel bush	50.73.338.1	3
29	Boccola interna in acciaio / Internal steel bush	50.73.337.1	3



**OPTIONAL PART**

**SWITCH-OFF KEY**  
Cod. ACC.101.0



**Mandatory Catalytic Converter**  
Cod. ACC.099.A1  
Optional in Y.078.L3K - Y.078.LZK  
Included in Y.078.K3K - Y.078.KZK

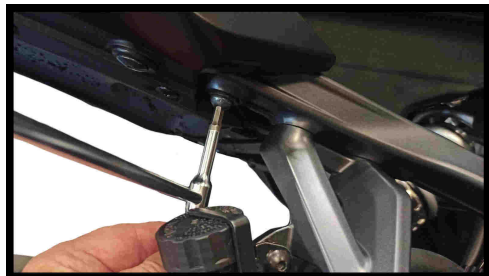
APPLICAZIONI / APPLICATIONS			
CODICE / CODE	SILENZIATORE / MUFFLER	TUBO / PIPE	NOTE
Y.078.L3K	CARBONIO (Coppa carbonio) / CARBON FIBER (Carbon cap)	INOX / ST. STEEL	CATALYTIC CONVERTER NOT INCLUDED
Y.078.K3K			CATALYTIC CONVERTER INCLUDED
Y.078.LZK	INOX NERO (Coppa carbonio) / STEEL BLACK (Carbon cap)	INOX / ST. STEEL	CATALYTIC CONVERTER NOT INCLUDED
Y.078.KZK			CATALYTIC CONVERTER INCLUDED

## SPOSTAMENTO PEDANA PASSEGGERO SU MT09 / PASSENGER FOOTREST REPLACEMENT ON MT-09

Per poter fissare lo scarico è necessario traslare indietro la pedana passeggero come da istruzioni. La vaschetta dell'olio dei freni va riposizionata con la staffa in dotazione.  
*In order to secure the exhaust, it is necessary to move the passenger footrest back as per the instructions. The brake oil pan must be repositioned using the supplied bracket.*



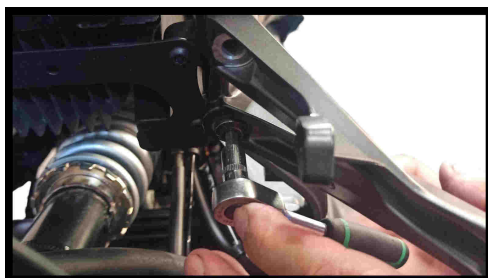
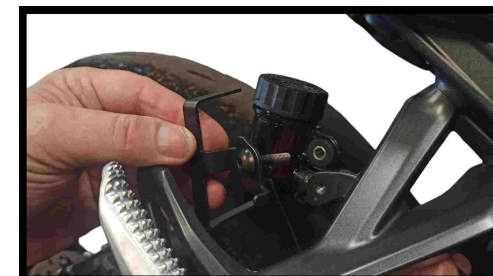
Posizione originale.  
*Original position.*



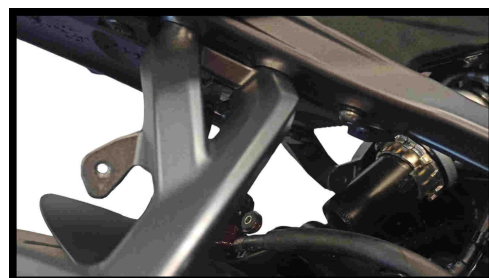
Per poter traslare la pedana, rimuovere la vite indicata.  
*To move the footrest remove the indicated screw.*



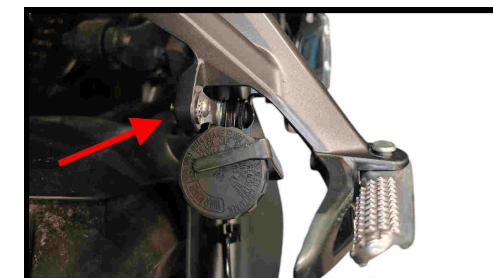
Rimuovere la vaschetta dell'olio dei freni ed il suo supporto. Andrà riposizionata successivamente sul telaio.  
*Remove the brake fluid pan and its support. It will be repositioned on the chassis later.*



Riavvitare la pedana in posizione arretrata sfruttando il foro liberato in precedenza. Riavvitare la vite originale.  
*Screw the footrest back into the rear position using the previously freed hole. Refit the original screw.*



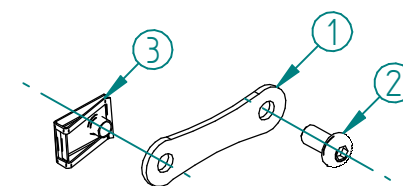
Posizionare la staffa in dotazione sulla pedana come mostrato. Serrare solo dopo aver riposizionato la vaschetta.  
*Position the supplied bracket on the footrest as shown. Tighten only after replacing the tray.*



Posizione finale.  
*Final position*



Mivv fornisce 2 prolunghe di diversa misura per ricollegare i cavi sonda.  
*Mivv supplies two extensions of different lengths to reconnect the sensor cables.*



SOLO SU MT-09 / ONLY ON MT-09

#	DESCRIPTION	PART NUMBER	QTY
1	Staffa / Bracket	50.SS.1577.0	1
2	Vite M6 x 12 / Screw M6 x 12	50.72.024.1	1
3	Dado rapido M5 / M5 cage nut	50.73.674.1	1