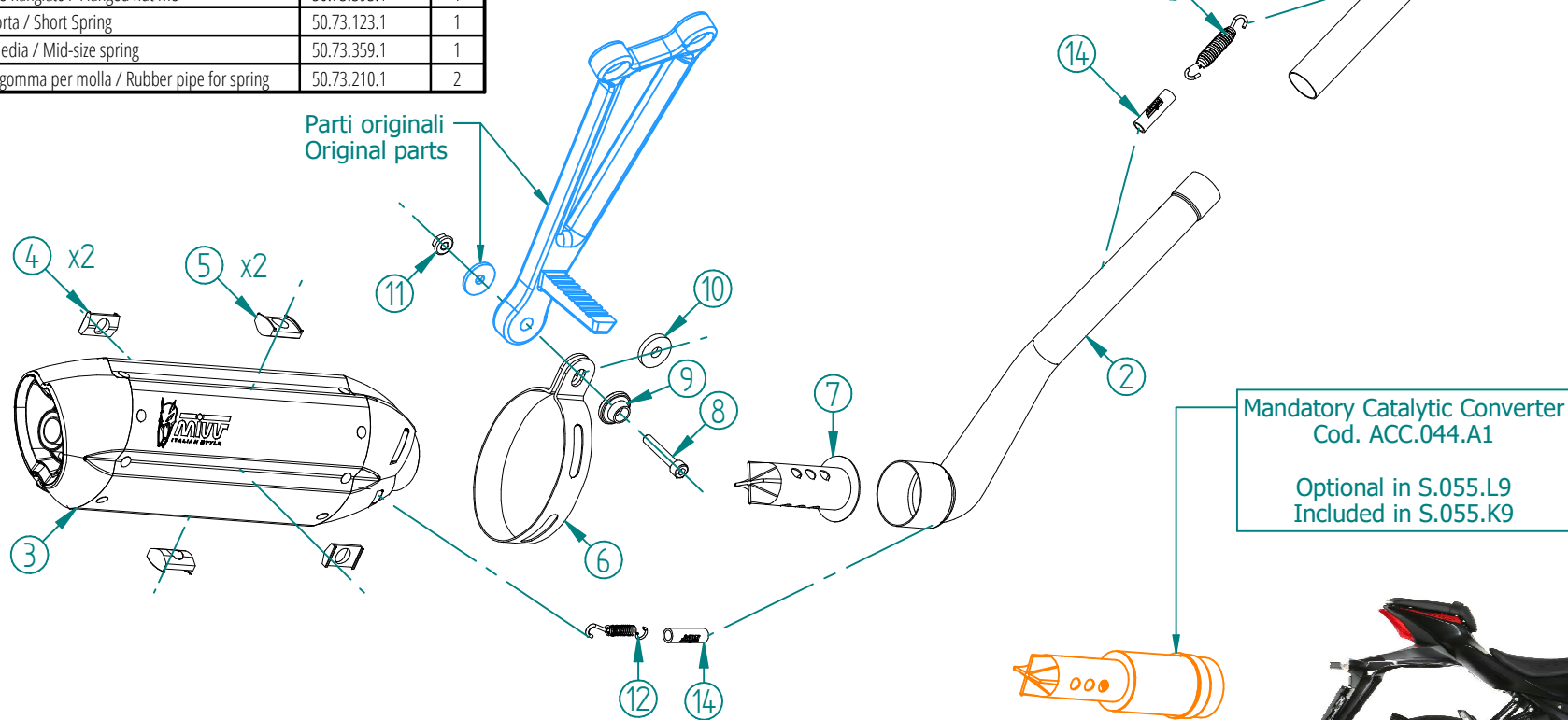


#	DESCRIPTION	PART NUMBER	QTY
1	Tubo di raccordo / Link pipe	9773S055S2A	1
2	Tubo di raccordo / Link pipe	9773S055S2B	1
3	Silenziatore / Muffler - db killer 50.DK.143.0	SUONO 270	1
4	Tassello piccolo / Rubber small block	50.73.202.1	2
5	Tassello grande / Rubber big block	50.73.203.1	2
6	Staffa in carbonio / Carbon fiber bracket	50.SS.180.1	1
7	dB Killer	50.DK.081.0	1
8	Vite M8x45 / Screw M8x45	50.73.602.1	1
9	Rondella in alluminio nera / Black aluminium washer	50.73.221.1	1
10	Rondella in gomma / Rubber washer	50.73.227.1	1
11	Dado M8 flangiato / Flanged nut M8	50.73.393.1	1
12	Molla corta / Short Spring	50.73.123.1	1
13	Molla media / Mid-size spring	50.73.359.1	1
14	Tubo in gomma per molla / Rubber pipe for spring	50.73.210.1	2



APPLICAZIONI / APPLICATIONS				
CODICE / CODE	SILENZIATORE / MUFFLER	TUBO / PIPE	FASCETTA / CLAMP	NOTE
S.055.L9	STEEL BLACK (COPPE CARBONIO) / STEEL BLACK (CARBON CAPS)	INOX / ST. STEEL	CARBONIO / CARBON FIBER	CATALYTIC CONVERTER NOT INCLUDED
S.055.K9				CATALYTIC CONVERTER INCLUDED

