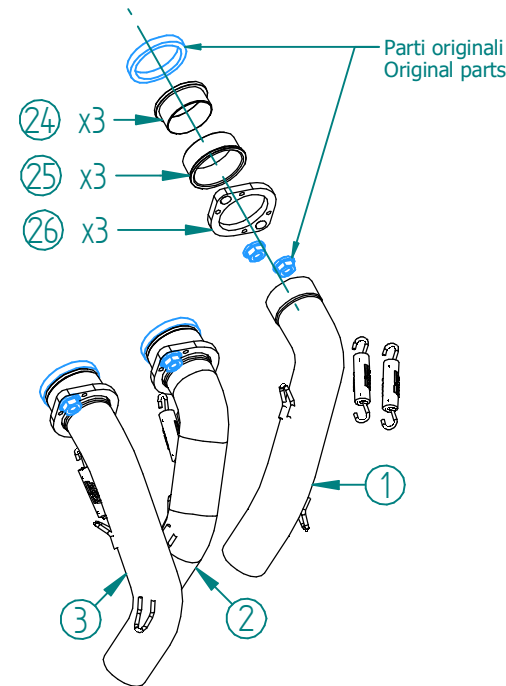
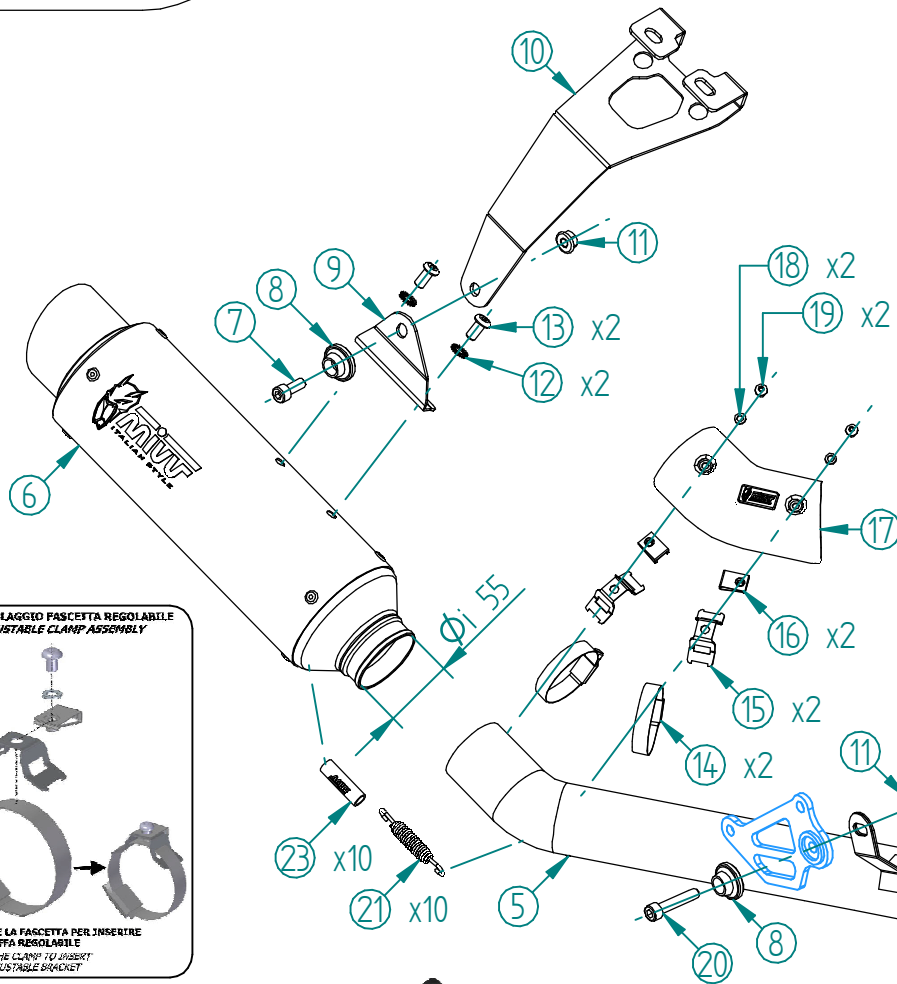
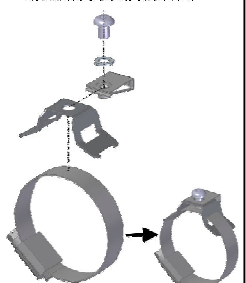


| #  | DESCRIPTION   | PART NUMBER  | QTY |
|----|---|--------------|-----|
| 1  | Collettore #1 / Down pipe #1                        | 9773Y066S2A  | 1   |
| 2  | Collettore #2 / Down pipe #2                        | 9773Y066S2B  | 1   |
| 3  | Collettore #3 / Down pipe #3                        | 9773Y066S2C  | 1   |
| 4  | Tubo di raccordo 3-1 / Link pipe 3-1                | 9773Y078S2D  | 1   |
| 5  | Tubo di raccordo / Link pipe                        | 9773Y082S2E  | 1   |
| 6  | Silenziatore / Muffler - db killer 50.DK.125.0      | GP PRO 280   | 1   |
| 7  | Vite M8x20 / Screw M8x20                            | 50.73.894.1  | 1   |
| 8  | Rondella in alluminio nera / Black aluminium washer | 50.73.221.1  | 2   |
| 9  | Staffa / Bracket                                    | 50.55.1277.0 | 1   |
| 10 | Staffa / Bracket                                    | 50.55.1493.0 | 1   |
| 11 | Dado M8 flangiato / Flanged nut M8                  | 50.73.393.1  | 2   |
| 12 | Rondella di sicurezza / Safety washer               | 50.73.604.1  | 2   |
| 13 | Vite M8 x 16 / Screw M8 x 16                        | 50.73.098.1  | 2   |
| 14 | Fascetta / Clamp                                    | 50.73.795.1  | 2   |
| 15 | Staffa / Bracket                                    | 50.73.1122.0 | 2   |
| 16 | Dado rapido M5 / M5 cage nut                        | 50.73.674.1  | 2   |
| 17 | Cover in carbonio / Carbon cover                    | 50.CR.070.0  | 1   |
| 18 | Rondella M5 / Washer M5                             | 50.73.351.1  | 2   |
| 19 | Vite M5 x 8 / Screw M5 x 8                          | 50.73.233.1  | 2   |
| 20 | Vite M8x40 / Screw M8x40                            | 50.73.075.1  | 1   |
| 21 | Molla media / Mid-size spring                       | 50.73.359.1  | 10  |
| 22 | Molla lunga / Long spring                           | 50.71.080.1  | 2   |
| 23 | Tubo in gomma per molla / Rubber pipe for spring    | 50.73.210.1  | 10  |
| 24 | Boccola interna in acciaio / Internal steel bush    | 50.73.337.1  | 3   |
| 25 | Boccola esterna in acciaio / External steel bush    | 50.73.338.1  | 3   |
| 26 | Flangia in alluminio / Aluminium flange             | 50.73.339.1  | 3   |



ASSEMBLAGGIO FASCETTA REGOLABILE  
ADJUSTABLE CLAMP ASSEMBLY



APRIRE LA FASCETTA PER INSERIRE  
LA STAFFA REGOLABILE  
OPEN THE CLAMP TO INSERT  
THE ADJUSTABLE BRACKET



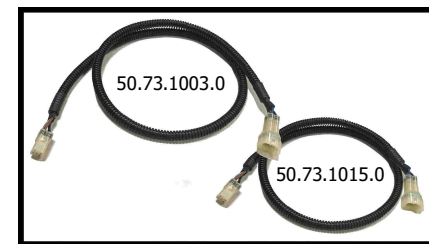
### OPTIONAL PARTS



**SWITCH-OFF KEY**  
Cod. ACC.101.0

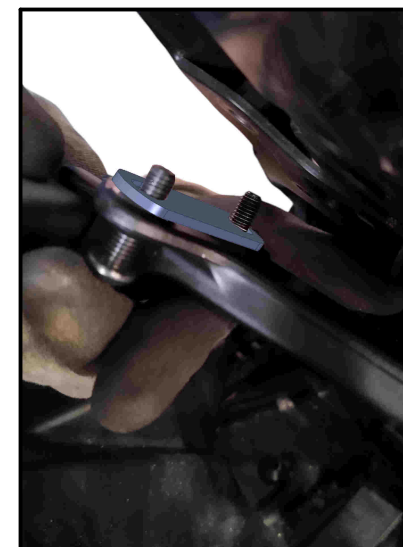
Mandatory Catalytic Converter  
Cod. ACC.099.A1

Optional in Y.082.LXBP  
Included in Y.082.KXBP



Mivv fornisce 2 prolunghe di diversa misura per ricollegare i cavi sonda.  
Mivv supplies two extensions of different lengths to reconnect the sensor cables.

| APPLICAZIONI / APPLICATIONS |                        |                  |                                  |
|-----------------------------|------------------------|------------------|----------------------------------|
| CODICE / CODE               | SILENZIATORE / MUFFLER | TUBO / PIPE      | NOTE                             |
| Y.082.LXBP                  | STEEL BLACK            | INOX / ST. STEEL | CATALYTIC CONVERTER NOT INCLUDED |
| Y.082.KXBP                  |                        |                  | CATALYTIC CONVERTER INCLUDED     |



Smontare il supporto pedane posteriori e posizionare le staffe 50.SS.1493.0 sul lato destro e la 50.SS.1494.0 sul lato sinistro della moto.  
*Remove the rear footrest support and place bracket 50.SS.1493.0 on the right side and bracket 50.SS.1494.0 on the left side of the motorcycle.*



Riposizionare il supporto pedane riavvitandolo con le viti originali.  
*Reposition the footrest support and screw it back in place using the original screws.*



Montaggio finale.  
*Final assembly.*