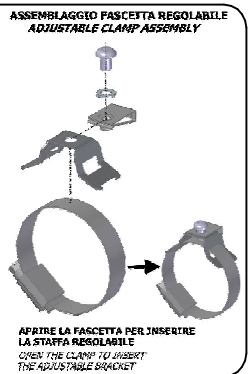
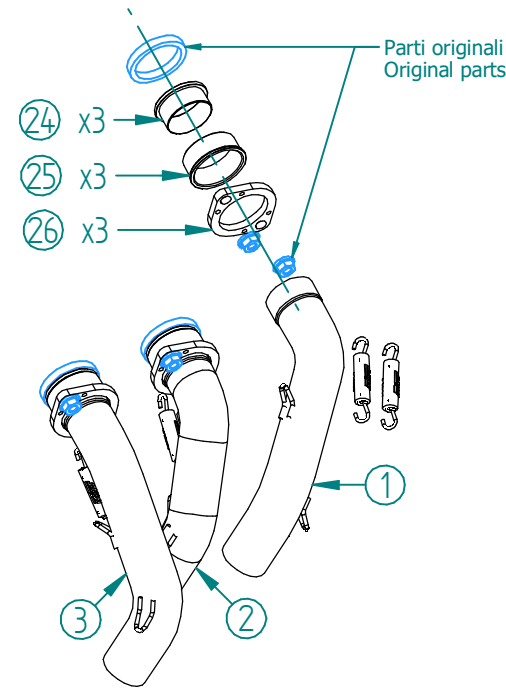
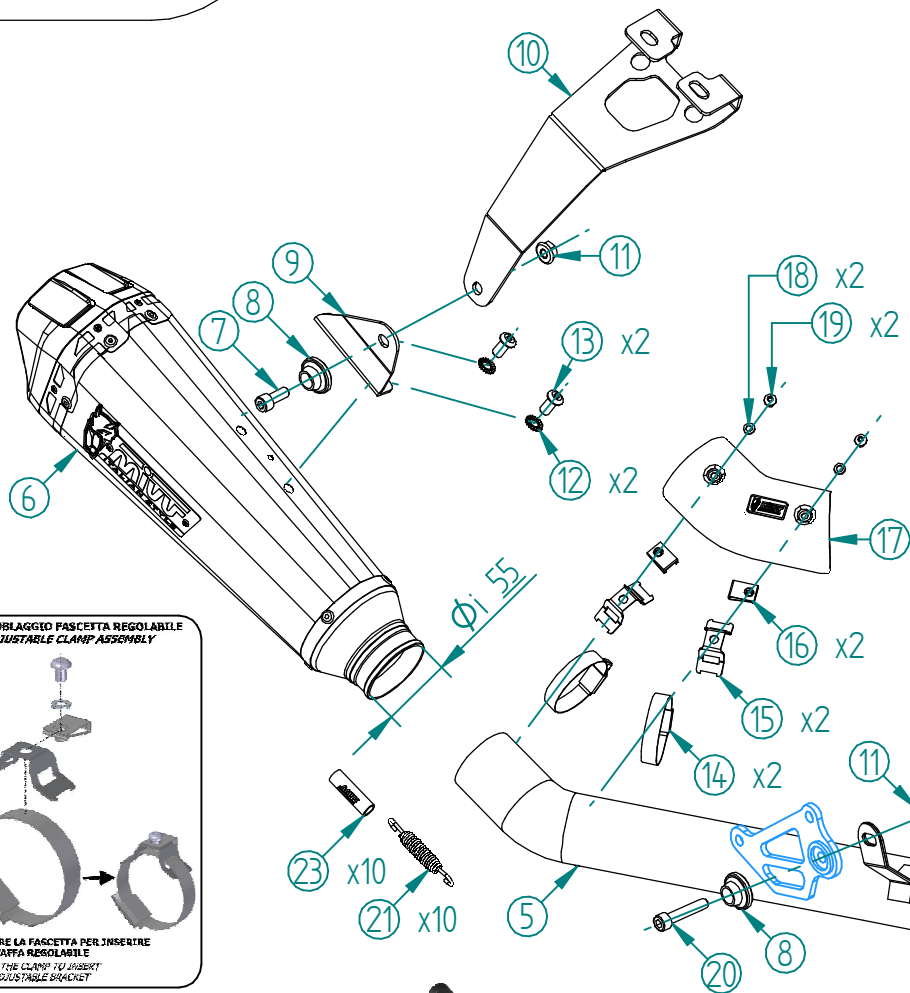
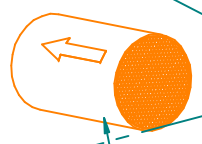


#	DESCRIPTION	PART NUMBER	QTY
1	Collettore #1 / Down pipe #1	9773Y066S2A	1
2	Collettore #2 / Down pipe #2	9773Y066S2B	1
3	Collettore #3 / Down pipe #3	9773Y066S2C	1
4	Tubo di raccordo 3-1 / Link pipe 3-1	9773Y078S2D	1
5	Tubo di raccordo / Link pipe	9773Y082S2E	1
6	Silenziatore / Muffler - dB killer 50.DK.123.0	Delta Race Ø55	1
7	Vite M8x20 / Screw M8x20	50.73.894.1	1
8	Rondella in alluminio nera / Black aluminium washer	50.73.221.1	2
9	Staffa / Bracket	50.55.1585.0	1
10	Staffa / Bracket	50.55.1493.0	1
11	Dado M8 flangiato / Flanged nut M8	50.73.393.1	2
12	Rondella di sicurezza / Safety washer	50.73.604.1	2
13	Vite M8 x 16 / Screw M8 x 16	50.73.098.1	2
14	Fascetta / Clamp	50.73.795.1	2
15	Staffa / Bracket	50.73.1122.0	2
16	Dado rapido M5 / M5 cage nut	50.73.674.1	2
17	Cover in carbonio / Carbon cover	50.CR.070.0	1
18	Rondella M5 / Washer M5	50.73.351.1	2
19	Vite M5 x 8 / Screw M5 x 8	50.73.233.1	2
20	Vite M8x40 / Screw M8x40	50.73.075.1	1
21	Molla media / Mid-size spring	50.73.359.1	10
22	Molla lunga / Long spring	50.71.080.1	2
23	Tubo in gomma per molla / Rubber pipe for spring	50.73.210.1	10
24	Boccola interna in acciaio / Internal steel bush	50.73.337.1	3
25	Boccola esterna in acciaio / External steel bush	50.73.338.1	3
26	Flangia in alluminio / Aluminium flange	50.73.339.1	3



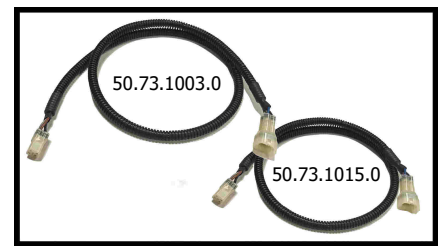
OPTIONAL PARTS

SWITCH-OFF KEY
Cod. ACC.101.0



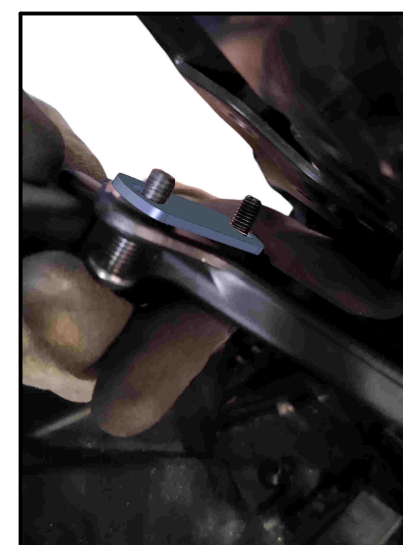
Mandatory Catalytic Converter
Cod. ACC.099.A1

Optional in Y.082.LDRB
Included in Y.082.KDRB



Mivv fornisce 2 prolunghe di diversa misura per ricollegare i cavi sonda.
Mivv supplies two extensions of different lengths to reconnect the sensor cables.

APPLICAZIONI / APPLICATIONS			
CODICE / CODE	SILENZIATORE / MUFFLER	TUBO / PIPE	NOTE
Y.082.LDRB			CATALYTIC CONVERTER NOT INCLUDED
Y.082.KDRB	STEEL BLACK	INOX / ST. STEEL	CATALYTIC CONVERTER INCLUDED



Smontare il supporto pedane posteriori e posizionare le staffe 50.SS.1493.0 sul lato destro e la 50.SS.1494.0 sul lato sinistro della moto.
Remove the rear footrest support and place bracket 50.SS.1493.0 on the right side and bracket 50.SS.1494.0 on the left side of the motorcycle.



Riposizionare il supporto pedane riavvitandolo con le viti originali.
Reposition the footrest support and screw it back in place using the original screws.



Montaggio finale.
Final assembly.