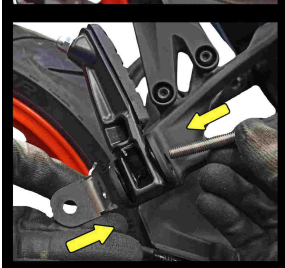
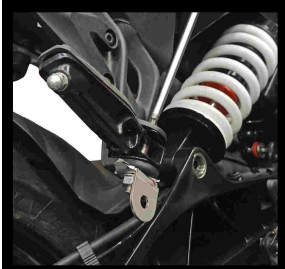




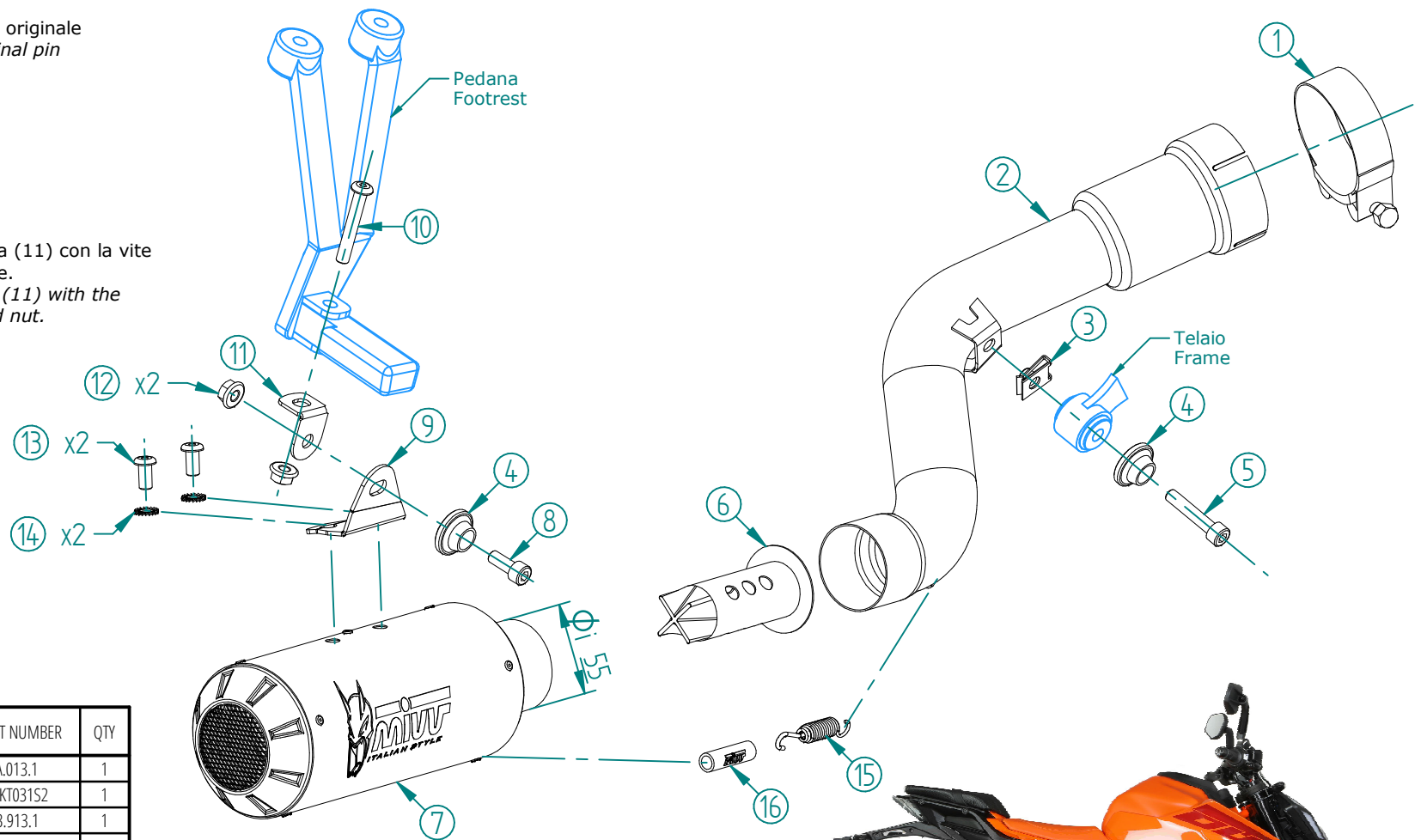
Rimuovere il perno originale  
Removing the original pin



Montare la staffetta (11) con la vite e dado in dotazione.  
Mount the bracket (11) with the supplied screw and nut.



Montaggio finale.  
Final assembly



#	DESCRIPTION	PART NUMBER	QTY
1	Fascetta Ø 74/79 mm / Pipe clamp Ø 74/79 mm	50.FA.013.1	1
2	Tubo di raccordo / Link pipe	9773KT031S2	1
3	Dado rapido M8 / Cage nut M8	50.73.913.1	1
4	Rondella in alluminio nera / Black aluminium washer	50.73.221.1	2
5	Vite M8x40 / Screw M8x40	50.73.075.1	1
6	dB Killer	50.DK.081.0	1
7	Silenziatore / Muffler	MK3 Øi 55	1
8	Vite M8x20 / Screw M8x20	50.73.894.1	1
9	Staffa / Bracket	50.SS.1503.SM	1
10	Vite M8x50 / Screw M8x50	50.73.088.1	1
11	Staffa / Bracket	50.SS.1606.0	1
12	Dado M8 flangiato / Flanged nut M8	50.73.393.1	2
13	Vite M8 x 16 / Screw M8 x 16	50.73.098.1	2
14	Rondella di sicurezza / Safety washer	50.73.604.1	2
15	Molla corta / Short Spring	50.73.123.1	1
16	Tubo in gomma per molla / Rubber pipe for spring	50.73.210.1	1

### OPTIONAL PARTS

Tubo no kat - No kat pipe  
Monta sia con silenzatori MIVV che con lo scarico originale  
It fits both MIVV and genuine silencer



**KT.031.C1**  
Duke 390



**KT.031.C2**  
Duke 125



APPLICAZIONI / APPLICATIONS		
CODICE / CODE	SILENZIATORE / MUFFLER	TUBO / PIPE
KT.031.SM3B	STEEL BLACK	INOX / ST. STEEL