



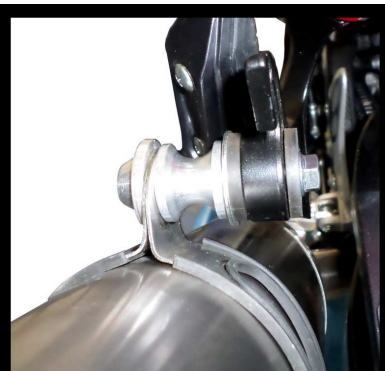
**MODEL** SUZUKI GSX-R 1300 HAYABUSA

**YEAR** 2008 -->

**LINE** SLIP ON

**MUFFLER** OVAL CARBON CAP

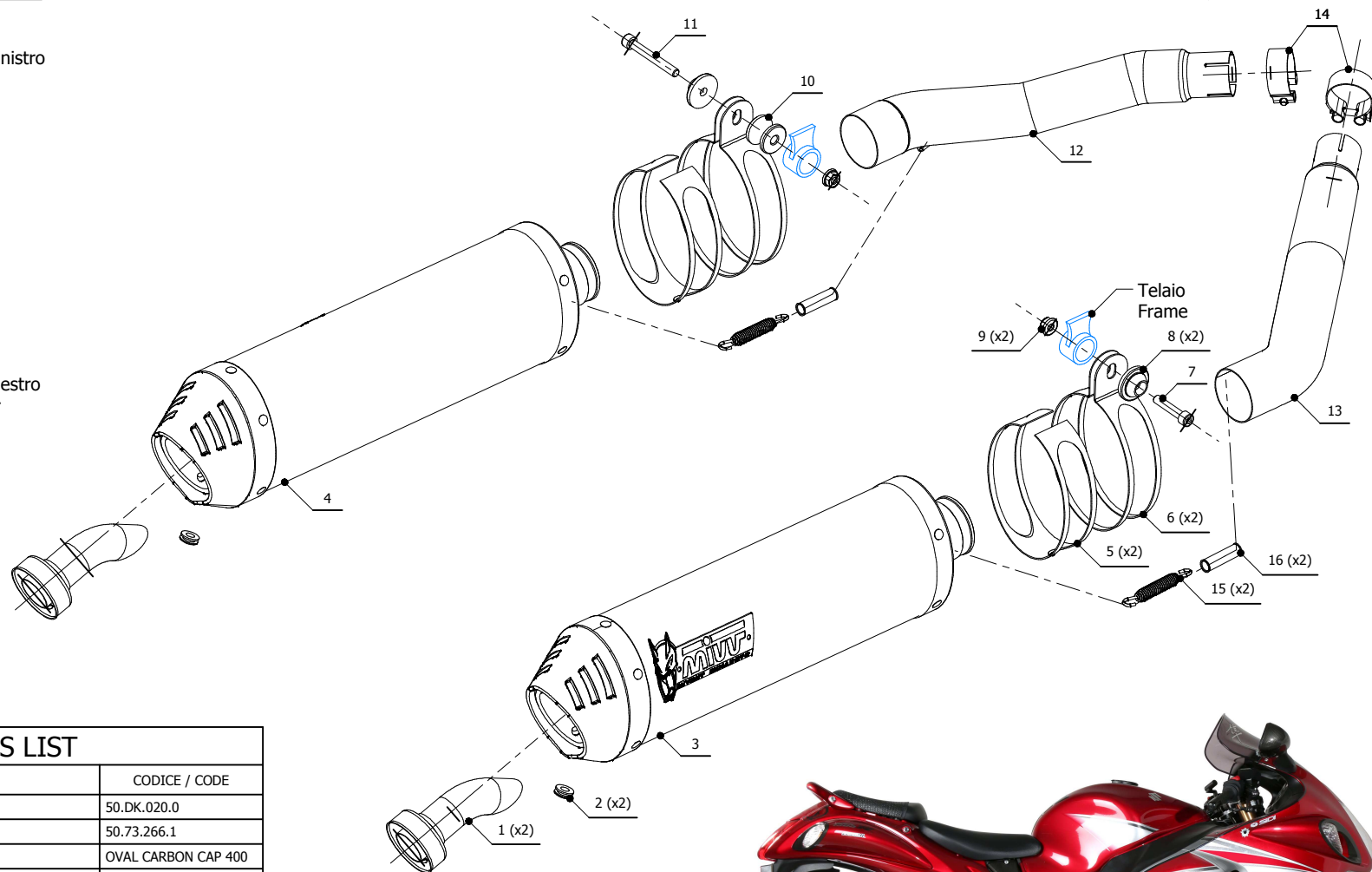
**SCHEMATIC**



Silenziatore sinistro  
Left silencer



Silenziatore destro  
Right silencer



**ELENCO PARTI / PARTS LIST**

#	QTÀ / QTY	DESCRIZIONE / DESCRIPTION	CODICE / CODE
1	2	DB killer / DB killer	50.DK.020.0
2	2	Tappo in gomma / Rubber stopper	50.73.266.1
3	1	Silenziatore destro / Right muffler	OVAL CARBON CAP 400
4	1	Silenziatore sinistro / Left muffler	OVAL CARBON CAP 400
5	2	Protezione in gomma per staffa / Rubber protection for bracket	50.73.041.1
6	2	Staffa / Bracket	50.SS.002.0
7	1	Vite M8x40 / Screw M8x40	50.73.075.1
8	2	Rondella in alluminio / Aluminium washer	50.73.063.1
9	2	Dado M8 flangiato / Flanged nut M8	50.73.393.1
10	1	Distanziale in alluminio / Aluminium spacer (Øe.30 Øi.8,5 h.25)	50.SS.055.1
11	1	Vite M8x65 / Screw M8x65	50.73.603.1
12	1	Tubo di raccordo sinistro / Left link pipe	9773S052SESX
13	1	Tubo di raccordo destro / Right link pipe	9773S052SEDX
14	2	Fascetta Ø 44/47 mm / Pipe clamp Ø 44/47 mm	50.FA.006.1
15	2	Molla lunga / Long spring	50.71.080.1
16	2	Tubo in gomma per molla / Rubber pipe for spring	50.73.210.1



**APPLICAZIONI / APPLICATIONS**

CODICE / CODE	SILENZIATORE / MUFFLER	TUBO / PIPE	FASCETTA / CLAMP
S.052.LEC	CARBONIO (COPPA CARBONIO) / CARBON (CARBON CAP)	INOX / ST.STEEL	INOX / ST.STEEL
S.052.LNC	TITANIO (COPPA CARBONIO) / TITANIUM (CARBON CAP)		