



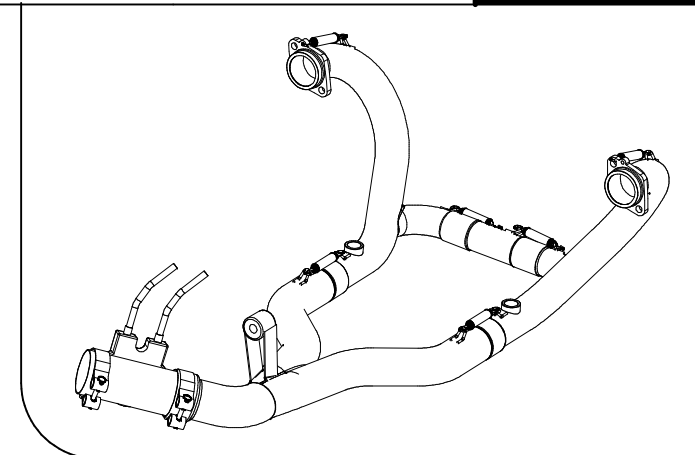
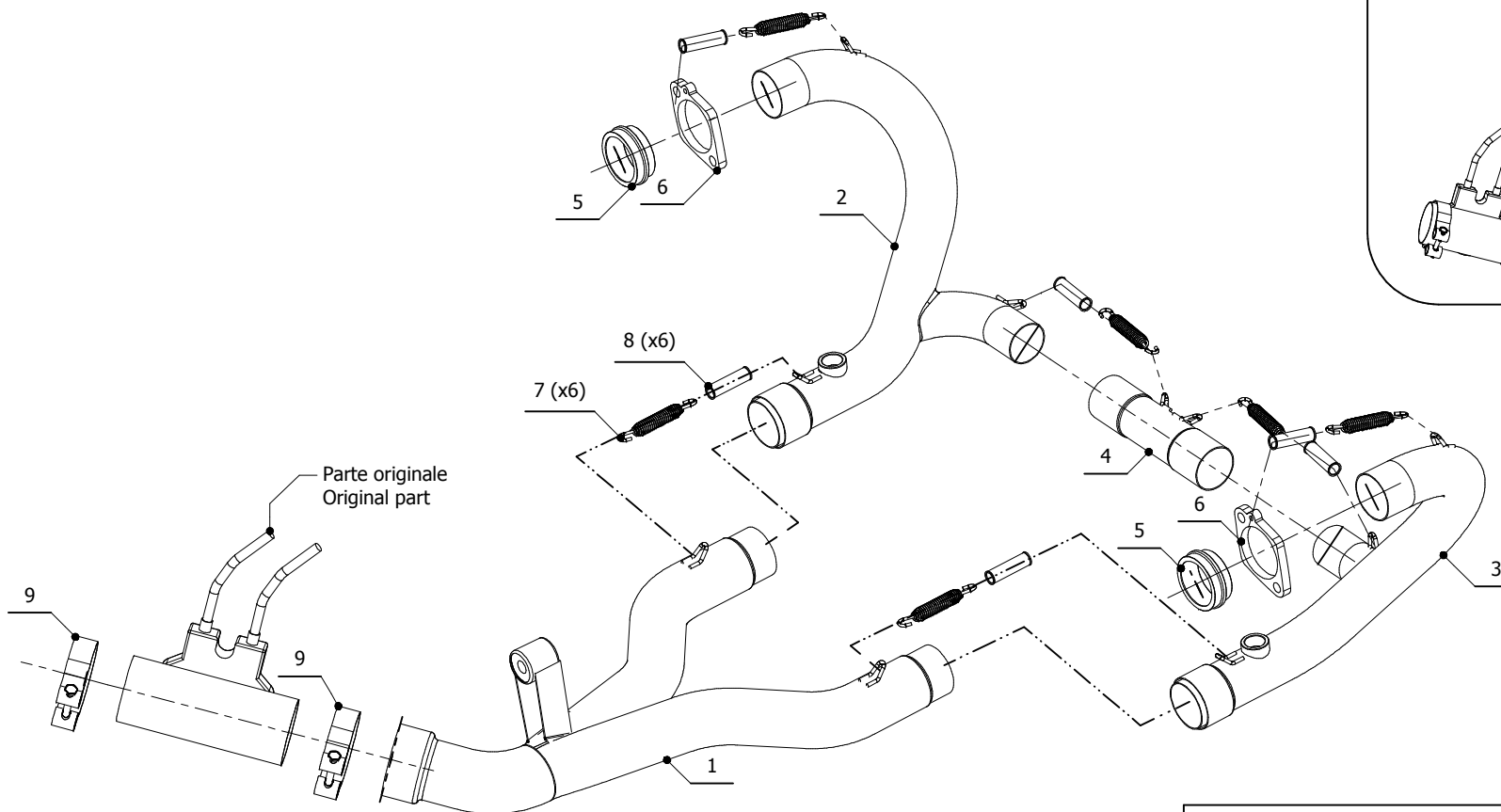
MODEL BMW R 1200 GS / ADVENTURE

YEAR 2010 - 2012

LINE SPORT

MUFFLER ELIMINA KAT / NO KAT

SCHEMATIC



ELENCO PARTI / PARTS LIST

#	QTÀ / QTY	DESCRIZIONE / DESCRIPTION	CODICE / CODE
1	1	Tubo di raccordo 2-1 / Link pipe 2-1	9873B012C1D
2	1	Tubo di raccordo sinistro / Left link pipe	9873B002C1A
3	1	Tubo di raccordo destro / Right link pipe	9873B002C1B
4	1	Tubo di raccordo / Link pipe	9873B002C1C
5	2	Boccola in alluminio / Aluminium bush	50.73.297.1
6	2	Flangia in alluminio / Aluminium flange	50.73.296.1
7	6	Molla lunga / Long spring	50.71.080.1
8	6	Tubo in gomma per molla / Rubber pipe for spring	50.73.210.1
9	2	Fascetta Ø 64/67 mm / Pipe clamp Ø 64/67 mm	50.FA.011.1

COD.: B.012.C1

- Monta sia coi silenziatori MIVV che con gli scarichi originali
- It fits both MIVV and genuine silencers